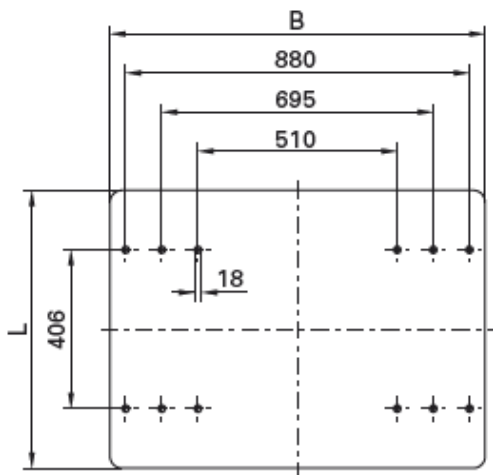
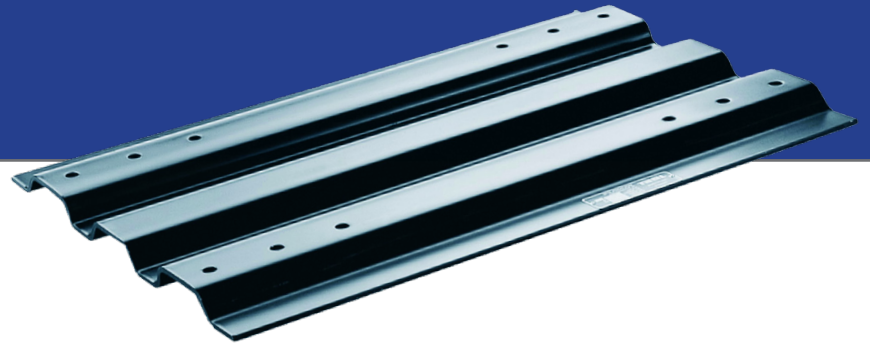
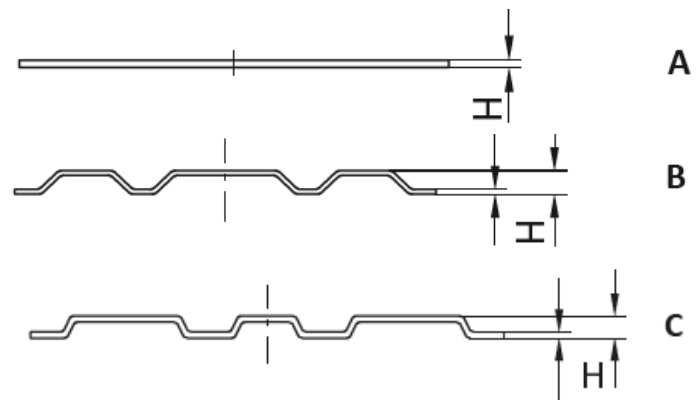


Mounting plates for fifth wheel couplings



Hole pattern as per DIN 74081 / ISO 3842



Part No.	Style	H (mm)	L (mm)	B (mm)	D value (kN)	Imposed load U (t)	Weight (kg)
MP0113	A	12	710	960	163	20	62
MP0115	A	12	710	1050	163	20	72
MP0118	A	16	710	1050	260	36	94
MP2101	B	22	710	960	163	20	44
MP2103-350	B	22	710	1050	163	20	48
MP4111-350	B	40	700	1050	163*	20*	48
MP4111-350SCA	B	40	700	960	163*	20*	45
MP4126	C	40	850	1050	163*	36	81
MP5111-350	B	50	700	1050	163*	20*	57
MP5111-350SCA	B	50	700	960	163*	20*	54
MPBNBOL	A	12	1450	1050	163	20	132
MPBNOL	A	12	1850	1050	163	20	142

* D Value and imposed load rating reduced if combination mounting height exceeds 300mm