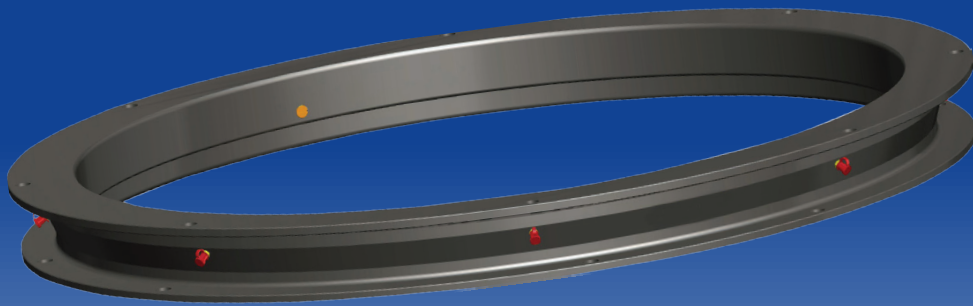


# JOST

## Ball bearing turntables and slewing rings Robust, strong and durable

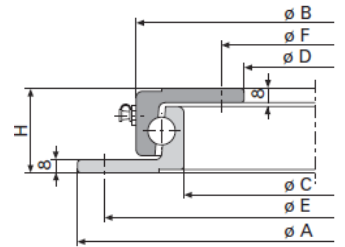
JOST ball bearing turntables and slewing rings cover the complete spectrum of trailer technology and have a solution to suit all applications.



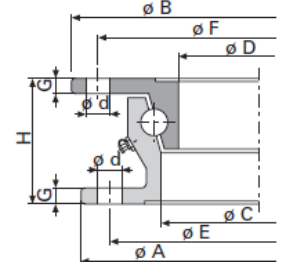
# JOST Ball bearing turntables - NZ range

- Up to 30t imposed load
- E-coated for premium corrosion protection
- Hardened bearings (KLK DR)
- 8 lubrication points for best distribution of grease (KLK DR)

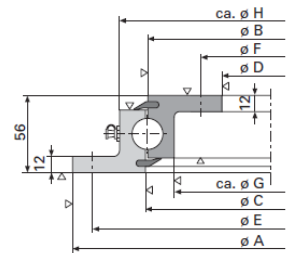
Series	Model	Axial Load kN	Dimensions (mm)								Weight kg
			A	B	C	D	E	F	G	H	
KLK L* and N*	KLK400L	7.5	400	342	292	230	375	260		45	11
	KLK500L	9	500	442	392	330	475	360		45	15
	KLK650L	15	650	592	542	480	625	510		45	20
	KLK750L	18	750	692	642	580	725	610		45	23
	KLK850L	25	850	792	742	680	825	710		45	27
	KLK950L	30	950	892	842	780	925	810		45	30
	KLK1050L	35	1050	992	942	880	1025	910		45	34
	KLK500N	18	500	437	384	315	475	340		52	17
	KLK650N	25	650	587	534	465	625	490		52	23
	KLK750N	30	750	687	634	565	725	590		52	28
	KLK850N	35	850	787	734	665	825	690		52	36
KLK1050N	45	1050	987	934	865	1025	890		52	40	
KLK HE and SO	KLKHE02000300	50	880	895	783	762	852	866	9	80	32
	KLKHE1000-22	100	1000	1011	886	859	960	974	10	90	63
	KLKHE13000100	100	1100	1111	986	959	1060	1074	10	90	69
	KLKHE18-1000	80	1000	1011	886	859	960	974	10	90	63
	KLKHE22000100	130	1200	1211	1086	1059	1160	1174	10	90	76
	KLKSO1000-24	120	987	1000	871	844	952	966	10	90	72
	KLKSO21000100	160	1095	1108	979	952	1060	1074	10	90	83
KDL	KDL900-3W	120	750	639	642	532	720	562	601	681	39
	KDL900-5W	180	950	839	842	732	920	762	801	881	51
	KDL900-6W	210	1050	939	942	832	1020	862	902	981	57
	KDL900-7W	250	1200	1089	1092	982	1170	1012	1051	1131	67
KLK DR	KLKDR4100010K	160	987	1000	868	842	952	966		90	73
	KLKDR4200010K	200	1095	1108	976	950	1060	1074		90	80
	KLKDR4400010K	300	1195	1208	1076	1050	1160	1174		90	92



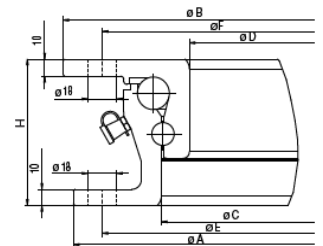
KLK L and N



KLK HE and SO



KDL



KLK DR

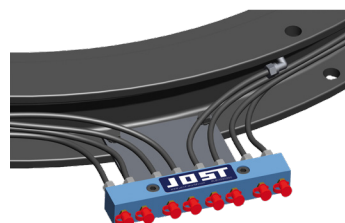
\* L Series - up to 30km/h

\* N series - over 30km/h

At speed less than 30kp/h the maximum axial load for N series can be increased by 30 to 50%



**Wear limit gauge** - suitable for JOST ball bearing turntables with a mounting height from 90 mm. It can be used to check if play/wear limit is reached or exceeded.  
Part number: KLE0005900



**Lubrication Manifold**  
Makes lubrication easier  
Makes connection to central lubrication system easier  
Item number KLE0000200