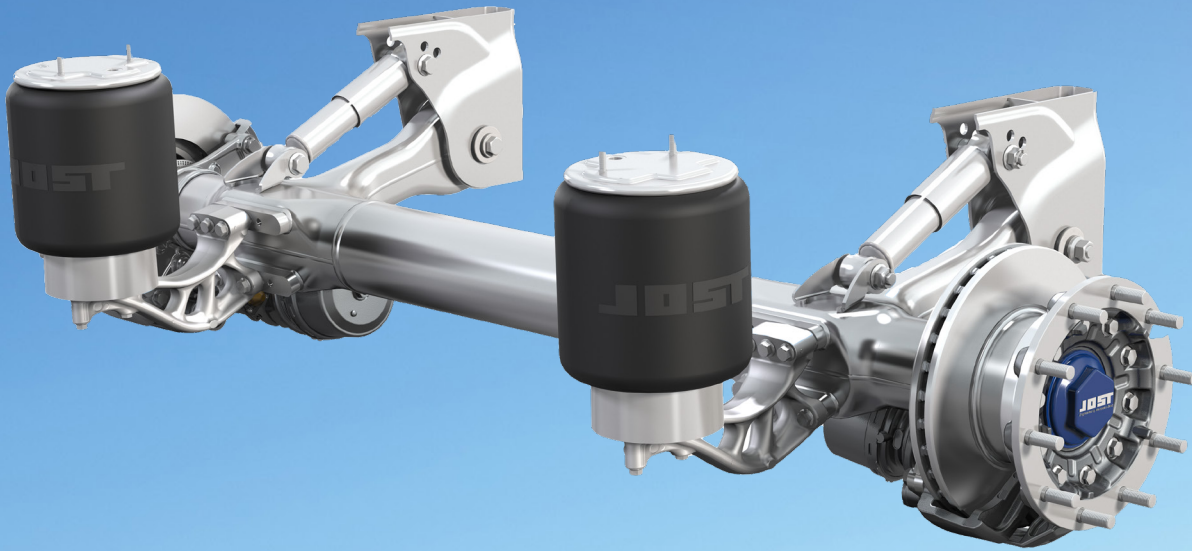


JOST

Axle Systems

DCA - Durable Compact Axle

- Low weight – from just 357kg including suspension
- Fewer components (due to its monocoque design)
- The axle housing integrates the trailing arm, axle tube, brake flange and axle journal, forming a perfect unit.
- Maintenance-free compact bearings
- Steer axle option with 21 degree steer angle



JOST New Zealand Ltd | www.jostnz.co.nz | Ph 0800 567 869 | sales@jostnz.co.nz

Member of JOST World



JOST Axle Systems

In January 2015, JOST took over Mercedes-Benz Trailer Axle Systems and became an important manufacturer of truck and trailer axles in Europe

In 2018, we introduced the JOST DCA WEIGHTMASTER and the DCA STEERMASTER trailer axle into NZ, primarily targeting the Quad semi and the 7 axle B train trailer market.

The fully-modular axle construction opens up unlimited possibilities with a minimal number of different parts. For you, the customer, this means fewer replacement parts, lower stock costs and, last but not least, lower life cycle costs thanks to unmatched quality.

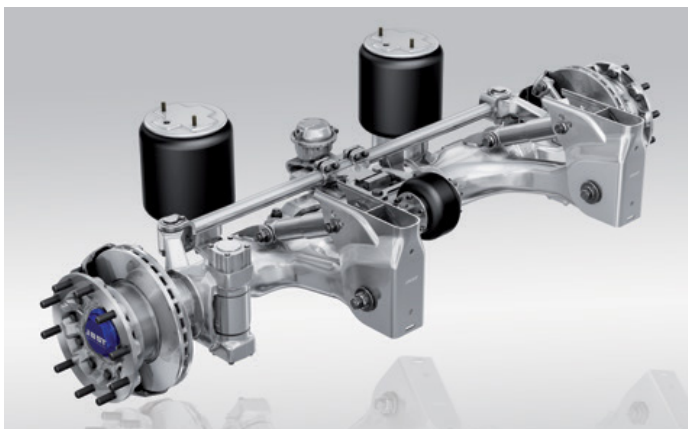
DCA – Durable Compact Axle

Unlimited diversity with just a few components



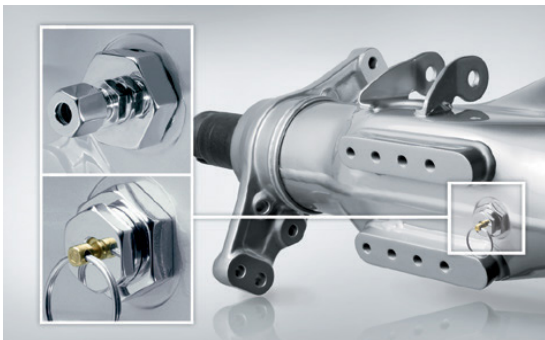
DCA WEIGHTMASTER

The DCA WEIGHTMASTER is the core member of the axle series. Its low weight – from just 376 kg, depending on which version – coupled with its durability, the advantage of fewer components (due to its monocoque design) coupled to the maintenance-free compact bearings, makes it ideal for use in the European transport industry. With its modular design, it is compatible with nearly all trailers, from platform semitrailers, curtain-siders, tippers, tankers and bulk distribution.



DCA STEERMASTER

With a steering angle of max. 21 degrees, the DCA Steer-master negotiates bends with consummate ease, while the lightweight design allows high payloads. In addition, the steering axle reduces the truck's tyre wear and fuel consumption. Like the other axles in the series, the DCA STEERMASTER is based on the tried-and-trusted components of the DCA modular system and, therefore, offers the versatility you expect when it comes to meeting your transport needs.



DCA AIRMASTER

As the world's only axle that stores compressed air for the brakes and air suspension in the axle housing, the DCA AIRMASTER is able to dispense with the conventional compressed-air tanks that appear on trailers or semitrailers, thereby freeing up space beneath the trailer as well as reducing weight by up to 50 kg. The DCA AIRMASTER paves the way for the introduction of trailblazing vehicle concepts.



DCA MEGAMASTER

The DCA MEGAMASTER was designed specifically for large-volume semitrailers with an interior height of three metres. This special-purpose axle and suspension is for high-volume road haulage applications, and vehicles that require a long axle travel, this range is based on the innovative and proven components of the DCA series. Despite the low ride height, loading docks can be reached for the purpose of loading and unloading.



DCA RAILMASTER

The new DCA RAILMASTER is designed for use in combined road-rail-sea transport. If a semitrailer is lifted by crane, conventional air bellows can be damaged while the vehicle is being set down. That is why the air bellows of the DCA RAILMASTER consist of two interlocking components which can separate during lifting without air and ensure the optimal position of the air bellows when the semitrailer is set down.



DCA PAVEMASTER

The DCA PAVEMASTER has an optimised air bellow support design especially for tippers in road finisher application. The DCA PAVEMASTER has been built to the highest standards to meet the specific demands of road construction.

DCA – Durable Compact Axle

Practically limitless variety from just a few components

The Compact Axle housing at the heart of the DCA series



The axle beam gives the series the name DCA – Durable Compact Axle. Integrating all the axle functions creates a compact axle housing that is extremely durable and lightweight thanks to its innovative design. The axle housing integrates the trailing arm, axle tube, brake flange and axle journal, forming a perfect unit.



Wheel end

A robust construction that has proven itself millions of times. The optimal heat dissipation ensures a very long lifespan for the brake discs and brake pads. The brake discs – made out of a wear-resistant alloy – and the wearing parts are structurally identical to those of Mercedes-Benz trucks.



Hanger bracket

With three hanger brackets each – in some cases also optionally available in stainless steel and as boltable solution – the DCA series in combination with the appropriate air bellows supports makes possible all ride heights from 215 mm to 535 mm, from mega trailer to tipper.



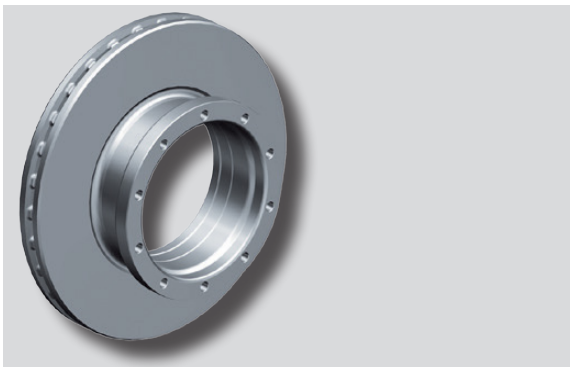
Compact bearing

Maintenance-free thanks to the use of state-of-the-art compact bearing technology that has been proven a million fold. No re-adjustment required
5 years or 1 million kilometer warranty, whichever comes first



Air bellow support

The DCA series can be fitted with standard, weight-optimized or application-specific tail ends, covering all areas of trailer usage.



Brake Disc

Excellent braking performance with tried and tested components. The high-performance alloy, optimised for wear behaviour, keeps your operating costs under control. The proven ventilation system ensures a controlled temperature level in the entire wheel head.



Knorr Caliper

The DCA series is supplied with the Knorr-Bremse SN6 and U6 Caliper in New Zealand, providing national compatibility

WEIGHT OPTIMISER 27 (Optional)

Weight-saving air bellow support for maximum payload

The WEIGHT OPTIMISER 27 maximises trailer payload thanks to its innovative aluminium design. The topology is optimized for exceptional strength and stability under all conditions of air bellows loading. WEIGHT OPTIMISER 27 saves a further 9kg per axle (27kg per Tri-axle semi-trailer) making a new contribution to improving the economy of efficient goods transportation. Its reduced weight allows increases in payload offering hauliers significant advantages.



JOST Tyre inflation systems

Plug & Play solution for trailer axles

When the tyre inflation system is used on a semitrailer or a trailer the tyre pressure on all axles will be automatically adjusted. The system ensures, that the tyre pressure is constantly at an optimal level. As a result accident risks and unplanned stops to the workshop are significantly reduced. Optimum tyre pressure reduced wear and fuel consumption. Therefore fleet owners benefit from reduced operating costs. All JOST axles of the DCA series with rigid, steered or integrated air tank versions are available options; with a Plug & Play solution for tyre inflation systems.

DCA AIRMASTER, equipped with the JOST Plug & Play solution for tyre inflation systems, has two separated air circuits within the axle. The unique axle body air tank stores compressed air, for the brakes and air suspension, at the same time you benefit from the advantages of a tyre pressure control system. The JOST Plug & Play solution for tyre inflation systems is compatible with all common control devices, therefore no further installations are needed on the axle. DCA axles with tyre inflation systems guarantee maximal flexibility for the trailer builder and fleet owners alike. The JOST tyre inflation system is available for all JOST trailer axles in the DCA series.



JOST ROCKINGER TRIDEC