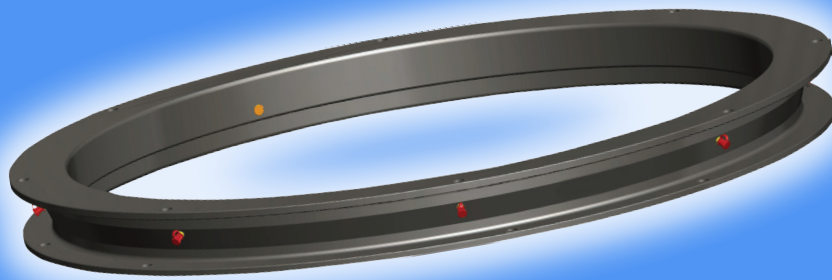


Ballrace Turntables

JOST

Robust, strong and durable

JOST ball bearing turntables and slewing rings cover the complete spectrum of trailer technology and have a solution to suit all applications.



JOST Ball bearing turntables

Double Row

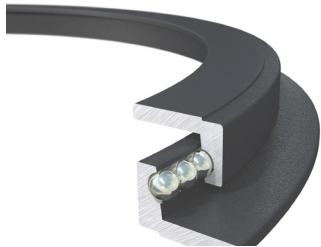
KLK DR



- Labyrinth seal protects track from dirt, even in extreme conditions
- Up to 30t imposed load
- E-coated for premium corrosion protection
- 8 lubrication points for best distribution of grease

Agriculture

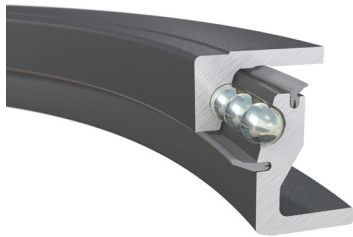
KLK L and N



- E-coated
- L series: Equipment up to 30 km/h
- N series: Agricultural trailers and light truck trailers over 30 km/h
- Up to 4.5t imposed load

Single Row

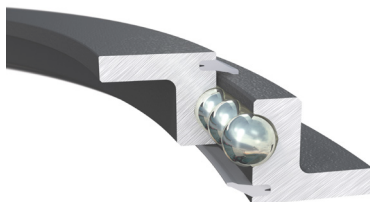
KLK HE and SO



- Single row
- E-coated
- Undrilled
- Up to 18t imposed load

Low Profile

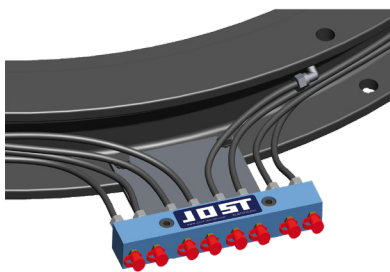
KDL 900



- E-coated
- Low profile (56mm)
- Up to 25t imposed load

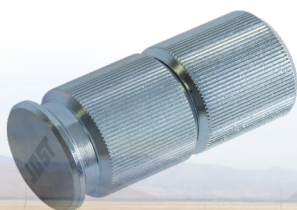
Lubrication manifold

Ease of maintenance



Makes lubrication easier
Makes connection to central lubrication system easier
Item number **KLE0000200**

Wear limit gauge



The wear limit gauge is suitable for JOST ball bearing turntables with a mounting height from 90 mm. It can be used to check if play/wear limit is reached or exceeded.

Part number: **KLE0005900**