

JOST Towing Efficiency



RO500B66500 - Rockinger 50mm Automatic Towing Coupling

- D Value 285kn
- Strong one-piece handle
- 160 x 100mm bolt pattern
- Rotatable pin – consistent wear
- Reinforced funnel
- Pneumatic or mechanical remote control option
- Coupling and jack knife sensor option
- No dust ingress due to sealed head unit



Sensor Technology...

Sensor Technology

Safe coupling

ROE 71547

In-cab status indicator & Drawbar turn angle warning system

The in-cab status indicator inspects the locking position of the coupling and sensor connections and shows them on an electric display in the cab. The drawbar turn angle warning system protects the vehicle and drawbar against damage as well as to rear mounted equipment e.g. tail lift cylinders



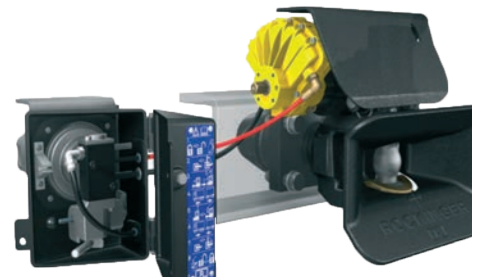
Pneumatic

Ease of operation

ROE 71677

Pneumatic remote control

The pneumatic control option brings power and convenience for opening and closing the coupling.



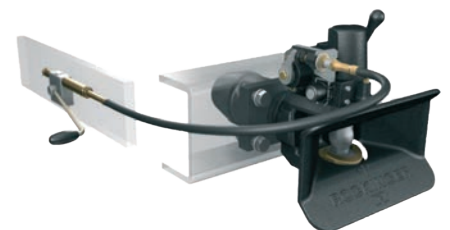
Mechanical

Remote control

ROE 71676

Mechanical remote control

The mechanical remote control enables operation with towing hitches that are difficult to access.



Lubetronic

Automatic lubrication

ROE 71624-1

Lubetronic Upgrade kit

ROCKINGER LubeTronic saves time-consuming, manual lubrication work on the coupling that has to be done during maintenance work.

The cartridge is filled with special oil and an ideal supplement for the lubrication filling of the coupling.

It has a product life of up to two years, depending on the model.

